

# ABC News Theme

(1985-2005)

Tony Ansell  
Peter Wall

♩=113

Trumpet in B♭ *ff*

Tenor Saxophone

Trombone

Baritone Saxophone *sfz*

Tuba *sfz*

Drum Set

5

Tpt.

Ten. Sax.

Tbn.

Bari. Sax.

Tba.

Dr.

8

Tpt.

Ten. Sax. *solo*

Tbn.

Bari. Sax.

Tba.

Dr.

*Solo*

11

Tpt.

Ten. Sax.

Tbn.

Bari. Sax.

Tba.

Dr.

13

Tpt.

Ten. Sax.

Tbn.

Bari. Sax.

Tba.

Dr.

# ABC News Theme

(1985-2005)

Trumpet in B $\flat$

Tony Ansell  
Peter Wall

$\text{♩} = 113$

*ff*

4

< >

10

14

< >

Tenor Saxophone

# ABC News Theme

(1985-2005)

Tony Ansell  
Peter Wall

♩=113

7

solo

Solo

11

solo

14

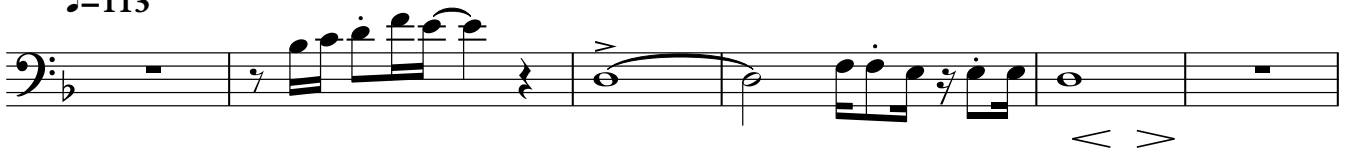
# ABC News Theme

(1985-2005)

Trombone

Tony Ansell  
Peter Wall

♩=113



# ABC News Theme

(1985-2005)

Baritone Saxophone

Tony Ansell  
Peter Wall

♩=113

*sfz*  $\curvearrowright$

6

8

10

12

14

# ABC News Theme

(1985-2005)

Tuba

Tony Ansell  
Peter Wall

♩=113

6

8

10

12

14

# ABC News Theme

(1985-2005)

Drum Set

Tony Ansell  
Peter Wall

♩=113

The drum set notation consists of five staves, each representing a different drum part. The first staff shows the initial rhythmic pattern, starting with a snare drum (S) and a bass drum (D) pattern. The second staff (labeled 6) features a complex pattern of snare and bass drum hits, with many notes marked with an accent (>). The third staff (labeled 9) continues this pattern, showing a mix of snare and bass drum hits. The fourth staff (labeled 12) shows a similar pattern, with many notes marked with an accent. The fifth staff (labeled 14) concludes the piece with a final snare and bass drum hit, followed by a double bar line.